

# InTrack

Rethinking logistics

---

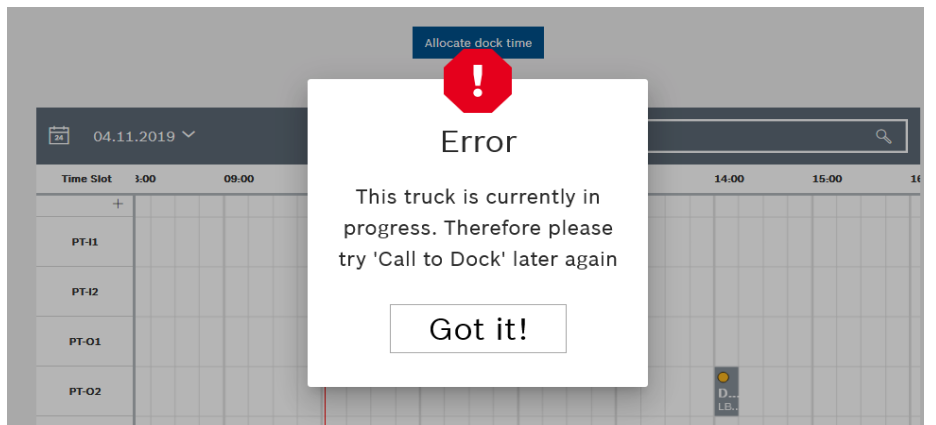
## Release Notes

Document version: 2019-11-13

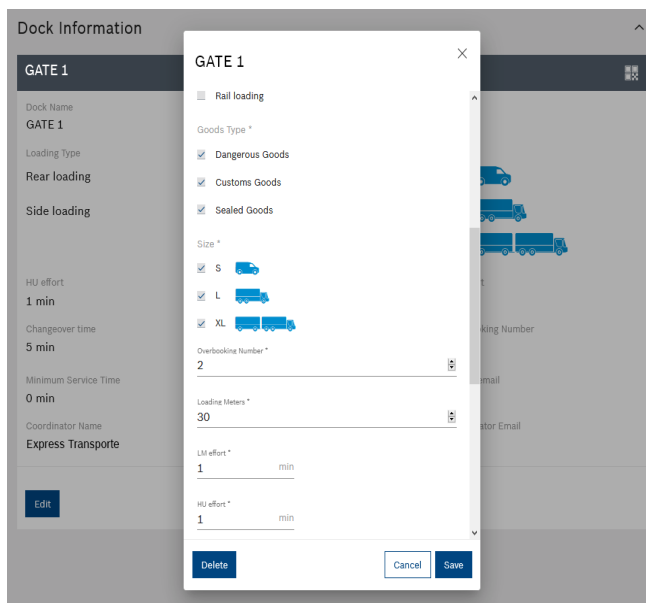
# Release Notes

The following table provides information about what is new and what has changed since the last release:

Date (Version)	Description
2019-11-13 (1.25.1)	<div data-bbox="403 546 544 600" data-label="Image"> </div> <p data-bbox="571 546 671 613"><b>Web UI New</b></p> <ul data-bbox="571 613 1511 775" style="list-style-type: none"> <li>○ Copyright statement was updated.</li> <li>○ Included Pagination in „Monitoring ULI“ &amp; „Monitoring HU“.</li> <li>○ New column “ULI Group Name” in “Monitoring ULI”.</li> <li>○ Create new error when processing a parallel “Call to dock” for a Single or a “ULI Group” registered initially for the same truck:</li> </ul>



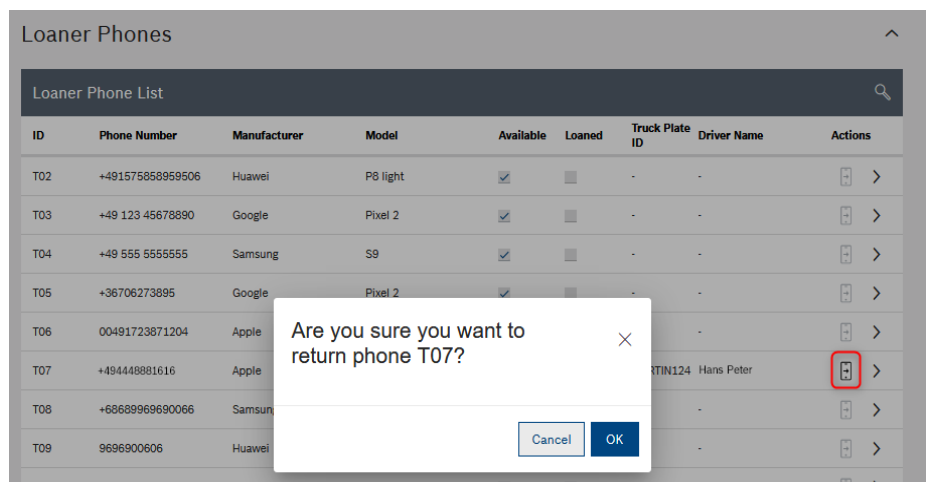
- Add new “Goods types” in “Hub Management – Dock Information” in order to process (if requested) Loads marked as “Customs Goods” and/or “Dangerous Goods” and/or “Sealed Goods” at such specifically defined docks (creation of Time Slot Allocation):



- Include “ULI collection dialog” also for click on ULI in search results in „Loads w/o time slot allocation”.
- Tracking/Reporting of KPIs per month in Support Panel for Admins.
- User can now personalize the table and download relevant data.

## Change

- Improved the performance of all IoT related pages so that the maximum loading time does not exceed 5 seconds.
- Tracking map is now linked to table “Tracking details”. The sum of all assets and their latest location are displayed there.
- Filter settings for show hubs or specific compartment are kept in the working view.
- Optimized behavior of search and search results in dock calendar on refresh.
- Adjusted number color for amount of ULIs included in an ULI collection in TSA.
- Hide “Driver App” and “LSP” from General Report filter “Origin”.
- Renamed “Data privacy statement agreement” to “Data Protection Notice”.
- When several ULIs are on a truck that have been part of an initial ULI collection registered in Gate App all those ULIs have to be processed completely before truck can exit hub area.
- For ULI collections, only one push notification is send to the driver. This contains instructions that apply to all ULIs being part of the collection.
- It is possible to reverse loaned status directly in “Hub Management – Loaner Phones”:



- Aligned size of modal windows for „Call to dock“, „Truck left“, and „Select dock“.
- Enable Googles “Snap To Road” Function for each User Role and remove the old one.
- Performance improvement, bug fixing and swipe table data from “Asset Details” to “Asset per Location”.
- Excel Import - General enhancements.
- IFTSTA Generation confirmation for excel upload added.

## Fix

- Global improvement for view in InTrack WEB: fixed the issue with loading Indicator disappearing even though not all data are showing up because the response takes some time.
- The red „actual“ line in Dock Calendar is „Auto-Refreshed“ again.
- Fixed the issue with wrong Booking History and wrong Starting date of Time Slot for Web ULI.
- Auto-allocate time slot for ULI only at docks of compartments, that ULI is meant for.
- Fixed mouse-over fly-out on time slot being cut-off at edge of grid in dock calendar.
- Fixed carrier name and county of origin for ULI collections in mouse-over fly-out.
- Fixed error while opening a TO in the TO Monitoring view.
- Fixed status overview of a TO is set to “DELIVERED” although it is just “COLLECTED”.



### Pairing App New

- Copyright statement was updated.



### ASN App New

- Copyright statement was updated.
- Swipe to delete images within the ASN App instead of checkboxes.
- New language available: Japanese.



### Driver App New

- Copyright statement was updated.



### XMS App New

- Copyright statement was updated.
- Included identifier of system environment (Quality “Q” & Staging “S”).

#### Change

- Display still HU data in “Inbound check” as long not all HU are checked successfully, although truck has left already dock.
- Outbound truck can be released only from dock, when all HU data are checked successfully in “Outbound check”.

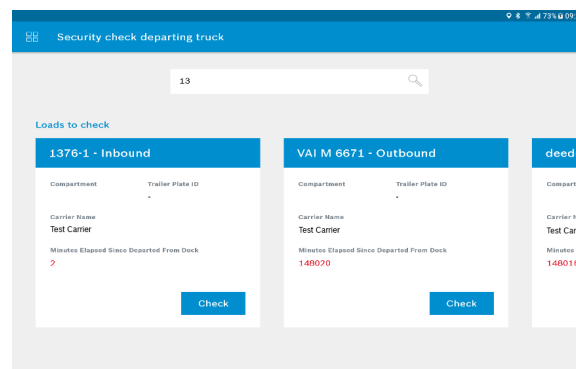
#### Fix

- Improved performance of XMS App by optimizing entities in data model.
- Improved typing single character for HU ID by including delay.
- Show all HUs of ULIs belonging to ULI Collection in Inbound/Outbound.



### Gate App New

- Copyright statement was updated.
- New language available: Spanish.
- Included identifier of system environment (Quality “Q” & Staging “S”).
- Display “Elapsed time since departed from dock” in “Security check departing truck”:



#### Change

- When creating an ULI collection in Gate App during registration the data from first ULI selected is adopted as default for all ULIs that are being added to this ULI collection for general information and driver identification. The carrier can be changed for this ULI collection.
- Display ULI number as additional information in “Security check entering truck” & “Security check departing truck”.



### **Receive App New**

- Copyright statement was updated.



### **Dock App New**

- Copyright statement was updated.
- New language available: Spanish.
- Included identifier of system environment (Quality “Q” & Staging “S”).

## **Robert Bosch GmbH**

Robert Bosch GmbH  
Robert-Bosch-Platz 1  
70839 Gerlingen-Schillerhöhe  
Germany

**[boschintrack.com](https://www.boschintrack.com)**

© Robert Bosch GmbH, 2019

Printed in Germany | Technical data is subject to modification without notice.